



# progix<sup>+</sup>plus™

**ProgixPlus™** from JDS Group, Inc.,  
is an easy to use, easier to  
manage, project management  
tool packaged as an add-on  
bundle for SalesLogix®.

Designed to offer managers of  
all projects, small and large,  
the ability to thoroughly, but  
concisely record and follow  
project details with the least  
amount of time invested

*"My projects often follow 'typical' scenarios, though they still require all of the stages and tasks to be followed to the letter. With the copy project functionality in ProgixPlus, I now have templates setup for my various project types, and when I need to start a new project, I just find the relevant template and 'Copy' it to the new account. What a lifesaver!"*

*Kara Jordan,  
Accounts Manager  
My BookHelper*

*"So many software companies claim their product is easy, but ProgixPlus delivers. I didn't need a lot of bells and whistles I'd never learn or remember how to use. ProgixPlus gave me just what I needed, nothing more: Easy to read grids and charts, hard to miss warnings, a few key reports and I don't even have to leave SalesLogix.*

*Doug Riggdon  
President  
ASL*

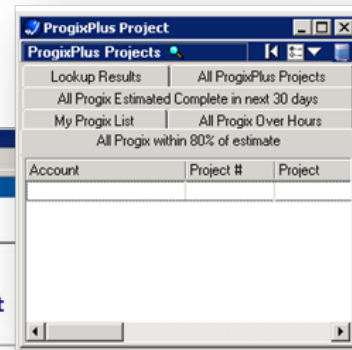
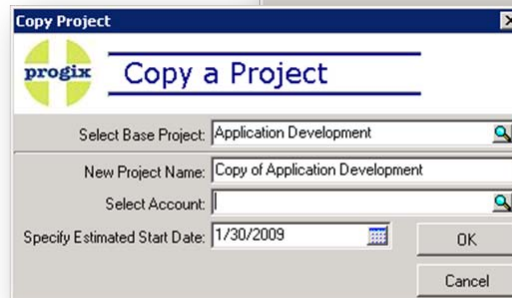
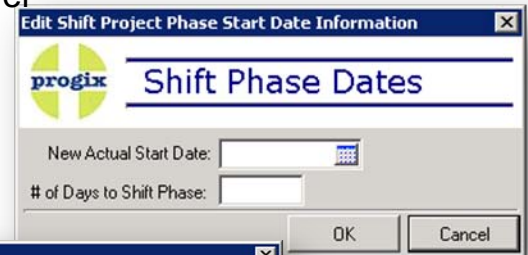
**where's your plan?** 

Visit [www.progixplus.com](http://www.progixplus.com) or call JDS Group (630) 983-7533 for more information.  
Partner inquiries rewarded.

© 2008-2009 JDS Group, Inc. All Rights Reserved

# Program Features

- At-A-Glance Project snap shot— displays JUST THE FACTS
- Easily *Shift* Dates: Project level, phase level or task level
- Manage/View projects without leaving SalesLogix
- Project Managers most requested reports—built in
- COPY a project from one Account to another
- SalesLogix controlled User Security
- Pre-defined SalesLogix Groups
- 3-Click Time Entries
- Job notes listed with time entries
- BOLD color-changing snapshot titles
- Pick lists managed through SalesLogix



Task	Task Leader	Hours Used	Hours Estimated	Task Start Date	Task End Date
Determine project scope	Dennis J. Synal	4	20	9/1/2008	11/7/2008
Secure project sponsorship	Adeline Lewis	3	20	12/1/2008	12/4/2008
Define preliminary resources	Paul Engelbrecht	6	15	11/30/2008	12/11/2008
Review preliminary software spec	Dennis J. Synal	0.5	17	1/17/2009	1/20/2009

System Requirements: Fully implemented SalesLogix LAN client v7.2 or v7.5 running on a recommended : Windows 2000 Server or Advanced Server; 512+ MB RAM; 1+ GHz processor; 4+ GB of free disk space for database + free space for RDBMS files.

JDS Group products are third-party products that are not published or distributed by Sage Software. Sage Software cannot warrant their performance and does not provide technical support for these products.